



Model 1018 **Rosette Sampling System**

The successor to the widely acclaimed 1016 Sampling System provides ease of operation along with low power operation. A revolutionary design in underwater electronic packages allows the Model 1018 Rosette Sampler to simplify the integration of sampling systems. The largest oceanographic packages to milliliter sized coastal samplers benefit from General Oceanics continuing effort to provide proven sampling reliability with tomorrow's technology.

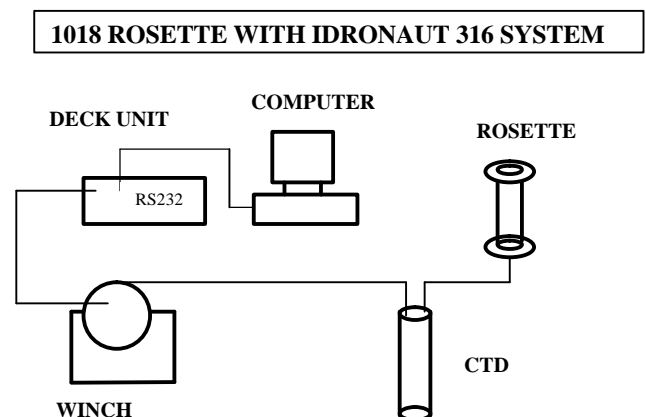
A Stingy Performer

With as little as seven and one half watts maximum power required (on approved sea cable with deck unit) the Model 1018 in conjunction with General Oceanics' Windows based control program, "Rose-Soft", provide the user with monitored reliable sampling as well as the rugged design and performance that users expect from the real 'Rosette' water sampler.



Simple Configuration

The three main modes of operation of the Model 1018 provide a variety of options for the user to optimize their sampling programs. Whether using the Model 1018 in a stand alone mode with the MK Deck Unit, with an integrated CTD, or in the autonomous mode (without conducting cable) using its own sensors; the 1018 is capable of sensing its own configuration. The user's time is spent analyzing the results rather than configuring the system. Gone are the hours spent configuring your system only to find out you're missing one of the cables or your accessories are incompatible. Simply plug in your cable and the 1018 intuitively knows how you want to use it (in the autonomous mode you'll have to enter your sampling criteria, but "Rose-Soft" makes that easy also). If you can use a cellular phone chances are you'll have no trouble using the Model 1018 Sampler.



Replacement Ease

Like its predecessors, the Model 1018 Sampling System is compatible with all previous assemblies. Replacing an existing 1015, 1016 or other sampler module with the 1018 is an easy chore for even the non-mechanical user. The Model 1018 is shipped with a sea cable interface cable, for stand alone use if required, and an interface cable for the CTD of your choice. Another accessory included is the monitor and RS232 interface (including cables) which allows the user to configure custom firing tables. Use this when you have the pressure, temperature and time release options and when you condition the battery before autonomous use.

Model 1018 workhorse

The Model 1018 with twelve, twenty-four and thirty-six sampling positions and is capable of handling up to thirty liter bottles (12 liter maximum on 36 position). For over thirty-five years the 'Rosette' sampler has shown that its rugged construction and reliability is the sampler of choice. Continuing to build longevity into our samplers has been General Oceanics' legacy and is forefront in the Model 1018 by using the same reliable triggering mechanism that sustained previous intelligent 'Rosette' models for almost fifteen years. Why depend on flimsy latches when positive retention and release are an industry standard. This reliability is now augmented by more efficient use of power with state of the art electronic technology. Couple the Model 1018 to any model Idronaut CTD (model 316 to 320), or any compatible CTD of your choice, and enjoy the ease of operation and reliable sampling our customers have come to expect.

Model 1018M Mini-Sampler

Don't need large volume samplers? The Model 1018M mini-sampler performs like its big brother but handles sampler sizes of 30ml, 60ml, 500ml, 1.2L, 1.7L, 2.5L and 5L (6 only). Same configurations available and integrates with the Idronaut CTDs as well as other brands. Use this model to full cable depth.

Mini Sampler

500mL-6.0L

LW Model 1018M Sampler

Using a smaller vessel and can't handle a large sampling payload? Here's the answer! The Model 1018M Light Weight sampler won't take you down to the ocean floor, but it will give you the flexibility of off-shore and coastal work with a lighter payload. Use it for estuary and river sampling! If you're sampling in less than 1500 meters (4900 ft.) then consider the Light Weight 1018 for the same ruggedness and reliability of its big brothers. Integrate an Idronaut 320 CTD for accredited profiling.

EZ- Push Button Lanyard Loading



Mini-Sampler 30-60mL



Removable Sampler Tray



No Lanyards Required For Water Bottle Loading!

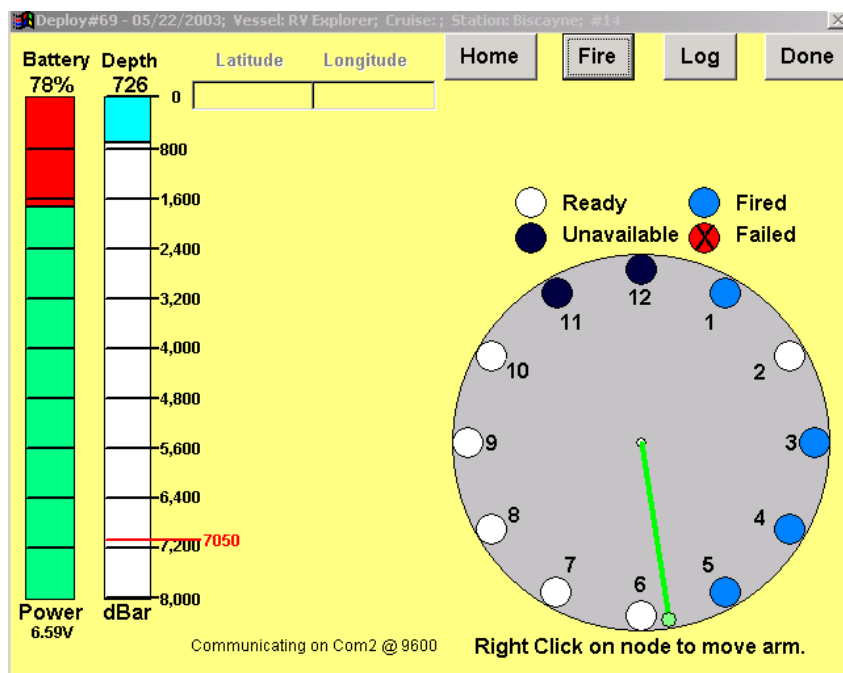


Rose-Soft

Rose-Soft software is designed to interface with General Oceanics Model 1018 series Intelligent Rosettes. *Rose-Soft* is an interactive software program, which allows the user to trigger water bottles in real time, or to program the Rosette to trigger bottles autonomously, using time or pressure variables.

Rose-Soft is used to operate stand alone Rosettes, that are not interfaced with a CTD. If the Rosette is used with an Idronaut CTD, use Idronaut's REDAS Software, for MKIIIB or MKIIIC CTDs, use Ocean Soft. For all other CTDs use the manufacturer's supplied software.

Rose-Soft Main Menu



Autonomous Operation

Pressure, Temperature and Timed sampling are part of the Autonomous option. This includes sensor(s), flash memory, real time clock and a dedicated communication port integrated inside the Model 1018, 1018M or LW 1018M samplers. No extra housings, cables or mounting brackets required; all neatly tucked inside the 1018 pressure housing and automatically initialized when you plug in the cable. Use "Rose-Soft" control software to setup cast criteria, firing tables and monitor power availability. Upload your data to the sampler and prepare to deploy. After deployment download your cast logs from the sampler to your computer and prepare for another cast. Communicating with Model 1018 is performed on the same cable that can be used to charge the battery. The sampler is capable of taking over 100 water samples (bottles) with a fully charged battery and has a continuous "on" time of over 1000 hours (@30mA).

Autonomous Mode Deployment

List of recent autonomous casts | Cast Details | Time Schedule | Depth Table | Download from Rosette

Deploy#: 66 Date: 10/15/2003

Start Depth (DBars) 2000 Increment DBars 200 Revs Depth 5 Trigger Depth (DBars) 2005

Calculate Depth Table

Fire Depth (DBars)	Fire Depth (DBars)	Fire Depth (DBars)
1 2000	13 0	25 0
2 1800	14 0	26 0
3 1600	15 0	27 0
4 1400	16 0	28 0
5 1200	17 0	29 0
6 1000	18 0	30 0
7 800	19 0	31 0
8 600	20 0	32 0
9 400	21 0	33 0
10 200	22 0	34 0
11 0	23 0	35 0
12 0	24 0	36 0

Save Table Up-Load & Start Cast Abort Cast Exit



General Oceanics Inc.

1295 N.W. 163rd Street Miami, Florida, 33169

Tel: (305) 621-2882 , Fax: (305) 621-1710

Email: sales@generaloceanics.com